



20TH WASBE 2024
GWANGJU-GYEONGGI, KOREA

2024 20th International WASBE Conference

Table of Contents

- 01. Conference Overview
- 02. Main Concert
- 03. Fringe Concert
- 04. Clinic

01

Overview

About Main Programs & Tickets

WASBE?

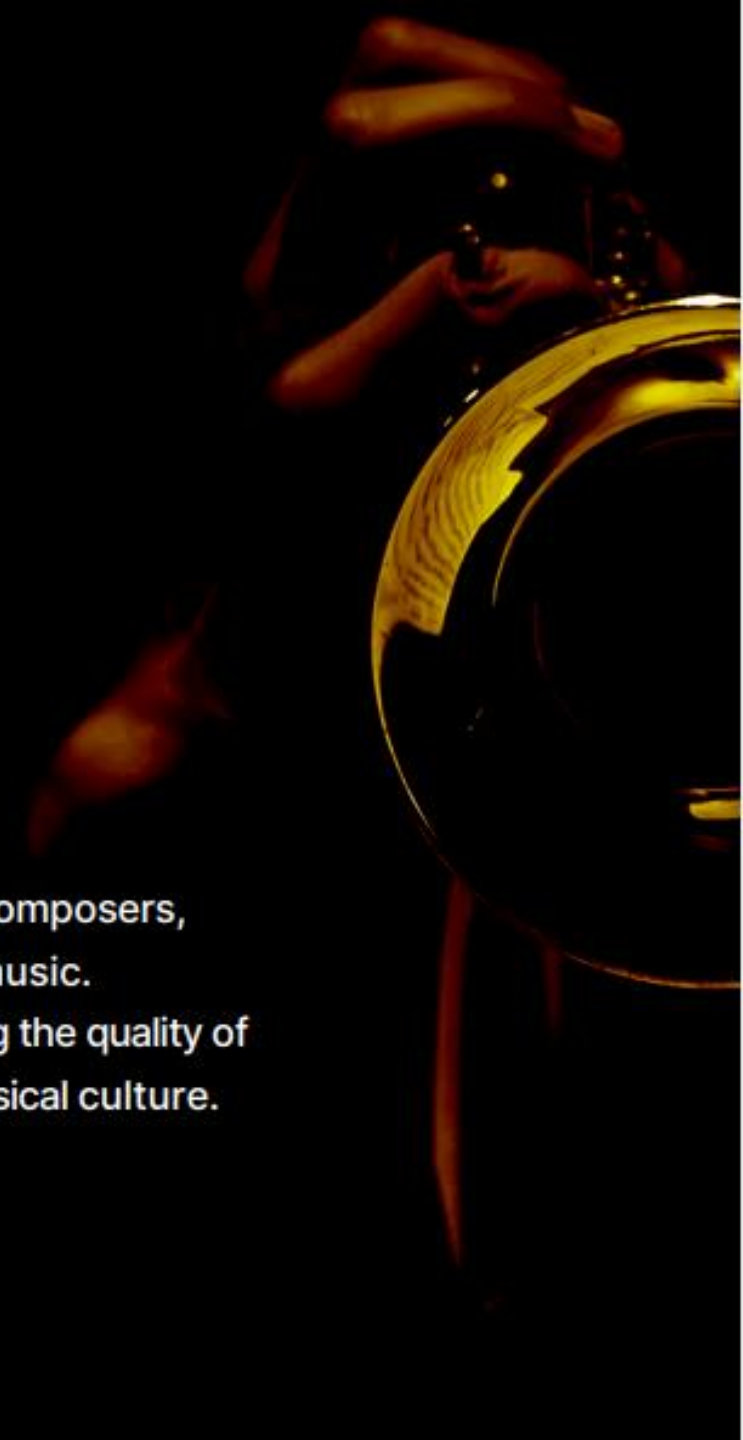
W A S B E



WORLD ASSOCIATION FOR SYMPHONIC BANDS AND ENSEMBLES

WASBE is the only international organization of wind band conductors, composers, performers, publishers, teachers, and instrument makers of wind music.

In fifty countries, over 1,000 people have dedicated themselves to enhancing the quality of the wind band throughout the world and exposing its members to new musical culture.



About the WASBE International Conference?

The OLYMPIC GAMES OF WIND MUSIC

Biennial Conference

held in a city selected among the fifty countries of the WASBE members

The Largest Wind Band Conference,
the best of Wind Music from all over the world gather in one place.

| Overview |



Conference Overview

Event	20 th International WASBE Conference Gwangju-Gyeonggi, KOREA 2024
Date	Official Event 2024. 7. 16.(Tue) ~ 7.20.(Sat) 5 days Pre-event 2024. 7. 13.(Sat) ~ 7. 15.(Mon) 3 days
Place	Namhansanseong Art Hall and other areas of Gwangju City, Gyeonggi Province
Contents	Conference, Concert, Exhibition, Seminar, Fringe Festival
Theme	Wildflower
Specials	Over ten countries, 1,000 music-related groups and companies participate Performances by the top international wind orchestras selected by WASBE Special concerts of world-renowned performers and bands
Host	WASBE, Gwangju City
Agency	Gwangju City Cultural Foundation, Yonhap news TV
Sponsor	Ministry of Culture, Sports and Tourism

| Main Programs |

Presenting various programs such as main concerts of the top Wind Orchestra selected by WASBE Committee, Clinics of world-renowned scholars, Masterclasses, exhibitions, Fringe Festivals, and Special Concerts

MAIN CONCERT



Selected by the WASBE committee, the world's finest Wind Orchestra performances

* Currently, 13 teams confirmed from the United States, France, Germany, and more

CLINIC



Seminar for academic exchange and education including seminars and masterclasses by the world's leading authorities in the wind music community

* Currently, 29 presenters in 18 classes confirmed

WYWO PROGRAM



Hosting educational sessions and special performances by world-renowned maestros for youth wind ensembles from around the globe

EXHIBITION



A global exhibition program featuring exhibitors from woodwind-related businesses, organizations, publishers, promotion of upcoming host countries

FRINGE FESTIVAL



The GLOBAL WIND ENSEMBLE FESTIVAL, featuring special performances by the world's top wind instruments artists, fringe concerts, and a variety of special concerts curated by Gwangju City.

| Main Concert |

Performances by the top international wind orchestra selected by WASBE

Composed of performances by 13 teams from 8 countries, selected by WASBE Artistic Committee



Australia
Adelaide Wind Orchestra



United States
Brooklyn Wind Symphony



United States
BYU Wind Symphony



United States
Central Washington University Wind Ensemble



Spain
Spanish Brass



South Korea
Jeju Seogwipo Wind Orchestra



Germany
Landesblasorchester Baden-Württemberg



Taiwan
National Chaiyi University Department of Music
Wind Orchestra



France
Orchestre d'Harmonie des Jeunes de Strasbourg



Singapore
Philharmonic Wind Orchestra

| Special Concert |

Designing special performances by world-renowned wind instrument artists and a Wind Orchestra representing South Korea,
To ensure a more enriched program with captivating and enjoyable content for the 20th WASBE event



US Navy Band



Jens Lindemann



Spanish Brass



2024 Gwangju WASBE Festival Wind Orchestra

| Clinics |

Inviting world-renowned experts in the field, selected by the WASBE Artistic Committee
A platform for academic exchange and education, including seminars and masterclasses



John Carnahan
The Wind Band Sound –
A Definitive Guide to Ensemble
Intonation



Jason Caslor
Squirrel! Being Present In A World
That Doesn't Want Us To Be



Masanori Fukuda
Thinking about the sound mechanism of
musical instruments and
the three-dimensionality
of ensembles



Evan Feldman
Hiding in Plain Sight:
"Re-composing" and
"De-composing" to Teach the
Inner Workings of Repertoire to
Students and Audiences



Jamal Duncan
Redefining the Concert Experience:
Creating dynamic concerts for our
audiences and students.



Andrew Pease
Cultivating Deeper Musicianship
through Improvisation in Concert
Ensembles



William Kinne
Unique Wind Band Works That
Encourage Collaboration,
Imagination, and Artistic Risk-
Taking



Trae Blanco
Look like their SOUND:
Two-step process to incorporating oral
articulation into physical gesture,
often lost in translation.



Simon Tillier
Beyond the Score: Using National
Identity to Enhance Your
Programming



Bryan Griffiths
Contemporary Australian
Composition for Wind Band: A
Coming of Age



Ka Chun Lin
A new perspective on the development of wind
band culture in Southern China and Southeast
Asia: The role of the Chinese community in the
rise of wind band culture during the pre-war
period



Brandon Duras
Now it's starting to sound like
music:
rehearsal techniques for a high
school classroom

| Clinics |

Inviting world-renowned experts in the field, selected by the WASBE Artistic Committee
29 presenters in 18 classes confirmed



Michael Mapp / Darrell Brown / Catherine Ikhuta / Tom Davoren
The Seven C's: Conductors, Composers, Commissions, Consortiums,
and the Culmination of the Creatively, Collaborative Process.



Nate Seamons / Kandis Taylor / David Fullmer
The Frederick Fennell Tapes:
Learning from the Master and the Kosei Wind Orchestra, 1989



Chee Meng Low / Damrih Banawitayakit / Leonard Tan / Benjamin Yeo
Diversity, inclusion and equity of the wind band movement in Thailand, Malaysia and Singapore.
A panel discussion on how to strengthen the relationship between the three Southeast Asia countries wind
related ensemble, and what's the difficulties we facing.



Bradley Ethington / Timothy Diem / Milton Laufer
Significant Wind Ensemble Repertoire by Underrepresented Composers



Joop Boerstael / Heleen Huijnen
Repertoire in the Pocket

| WYWO |

For the educational and special performance program featuring world-class maestros and wind ensembles,
Forming a Wind Orchestra comprising youth participants from around the world

Confirmed Conductors



Beatriz Fernández



SURAPOL THANYAWIBOOL



WYWO at WASBE Prague 2022

| Exhibition |

Composed of exhibitions from wind instruments-related businesses, organizations, publishers, and more

GLOBAL EXHIBITION PROGRAM



| Fringe Festival |

Enchanting outdoor performances unfolding amidst the beautiful nature of Gwangju City

From July 16th to 20th, a five-day event will take place at various landmarks in Gwangju City, including Namhansanseong, Gwangju City Hall Square, and Gonjiam Ceramic Park



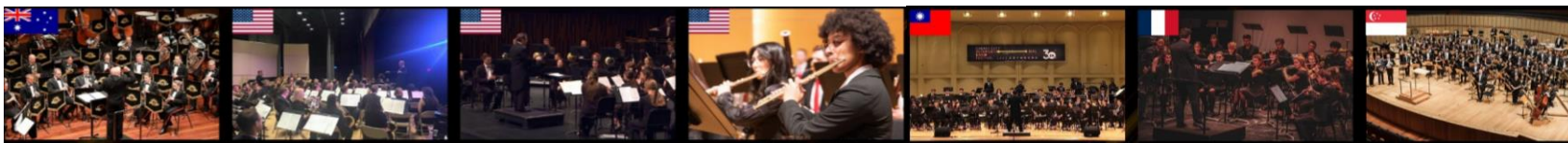
Namhansanseong



Gonjiam Ceramic Park



Gwangju City Hall Square



※ Among the participating teams in the main concert, 7 teams will take part.

| PR & Advertisement |

Media Partner – Yonhapnews TV, AD and News will be released nationwide



Media Promotion

Utilizing joint organizer Yonhapnews TV for news coverage and deploying media promotion strategies using cultural and entertainment programs



Offline advertising

Placing offline advertisements in key locations within Gwangju City, as well as in Seoul's subway stations, KTX trains, Incheon Airport, and other major transportation hubs.



Offline Promotion

Utilizing promotion through wind ensemble festivals, local festivals, and outreach performances to engage the audience.

| Conference Registration |

With the purchase of registration pass, attendees gain access to all main concerts, clinics scheduled for that day

* Early Bird Period: Until March 31, 2024

About Purchase

* Where to Buy: WASBE (<https://www.wasbe2024.com/ko>) > Registration and Accommodation

How to Buy

1. After accessing the WASBE website, click on the "Registration and Accommodation" menu
2. Click on the [Booking now] button for the desired type of registration pass will redirect you to the Ticket Link page
3. Select the date and click on the [Buy now] button



Registration and Accommodation

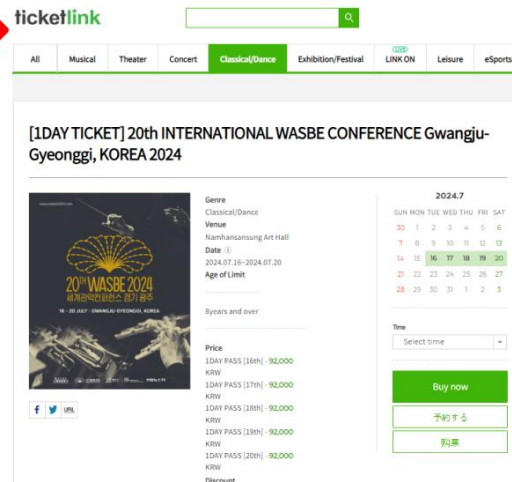
Conference Registration | Accommodation

Conference Registration

Day Pass Includes

Main Concert, Fringe Festival and Clinic&Presentation on your registration day

WASBE MEMBERS (1 Day Pass)	Early Bird 79,000 KRW Standard 92,000 KRW	Booking now
WASBE MEMBERS (2 Days Pass)	Early Bird 158,000 KRW Standard 184,000 KRW	Booking now
WASBE MEMBERS	Early Bird 211,000 KRW	Booking now



Types and Amounts

Type	Details	Amount(KRW)
WASBE MEMBERS	1 Day WASBE MEMBERS ONLY 1Day Pass for selected date	Early Bird : 79,000 Standard : 92,000
	2 Days WASBE MEMBERS ONLY 2Days Pass for selected date	Early Bird : 158,000 Standard : 184,000
	5 Days Pass WASBE MEMBERS ONLY 5 Days Pass	Early Bird : 211,000 Standard : 237,000
WASBE Special (All Day Pass Only)	Spouse WASBE MEMBERS SPOUSE ONLY 5 Days Pass	Early Bird : 118,000 Standard : 145,000
	Student Elementary – High school student ONLY 5 Days Pass	Early Bird : 158,000 Standard : 171,000
NON WASBE MEMBERS 5 Days Pass	NON WASBE MEMBERS ONLY 5 Days Pass	Early Bird : 316,000 Standard : 343,000
Gala Dinner	Gala Dinner on July 20, 2024 (Early Bird discount not available)	Standard : 55,000

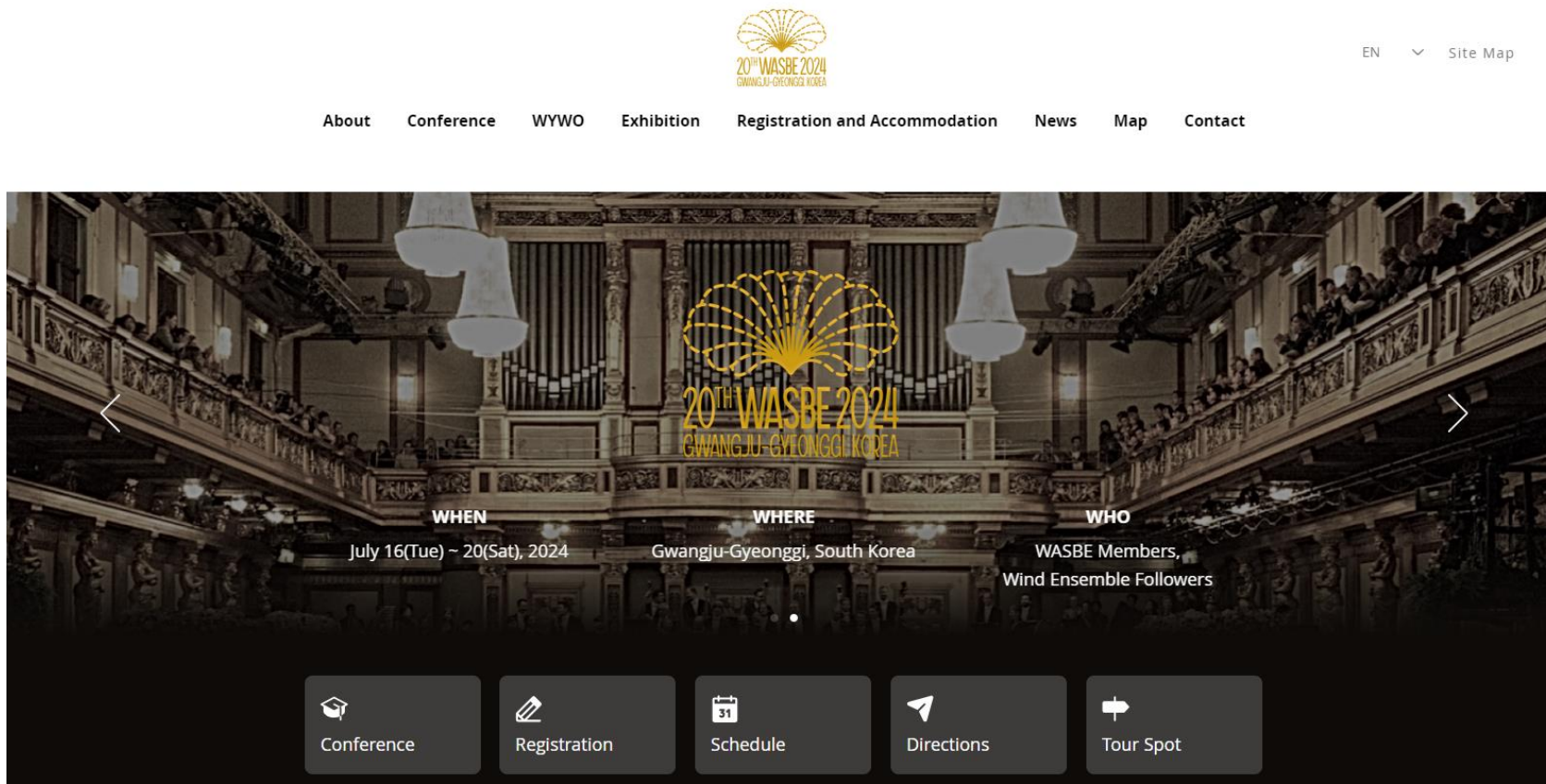
| Concert Ticket |

The purchase page on the WASBE website(<https://www.wasbe2024.com/ko>) is scheduled to open soon

Scheduled to open in **early April**

○ Price: 10,000 won per person per concert

* A discount is provided for group purchases of 20 or more



02

Main Concert

Introducing Bands

| Main Concert Band |



1. Gwangju WASBE Festival Wind Orchestra (South Korea)

Date 2024. 7. 16.(Tue) 14:00 ~ 15:00

Conductor Kang il Lee

Band Introduction A project band formed voluntarily to promote Korean wind music and the 20th WASBE Conference in 2024



2. Jeju Seogwipo Wind Orchestra (South Korea)

Date 2024. 7. 16.(Tue) 15:30 ~ 17:00

Conductor Mr. Dongho Lee

Band Introduction

- Jeju Seogwipo Wind Orchestra is the first public group of wind music run by a local government and has played an important role in making a great mark in history of Korean wind music since 1998
- In 2010, they became the first performing group to win the Korea Wind Music Award



3. Adelaide Wind Orchestra(Australia)

Date 2024. 7. 16.(Tue) 20:00 ~ 21:30

Conductor Bryan Griffiths

Band Introduction

- Established by alumni of the Elder Conservatorium Wind Orchestra in 2012
- One of Australia's premier symphonic wind ensembles.

4. Spanish Brass (Spain)



Date 2024. 7. 17.(Wed) 14:00 ~ 14:55

Band Introduction

- Active in the chamber music scene for 34 years, recognized as one of the most vibrant and highly acclaimed groups on the international music stage
- In 1996, the ensemble won First Prize in the Sixth International "Ville de Narbonne" Brass Quintet Competition (France)
- 1st place in the 2017 Vanke Awards
- Band member composition: 2 trumpets, 1 trombone, 1 French horn, 1 tuba



5. National Chaiyi University Department of Music Wind Orchestra (Taiwan)

Date 2024. 7. 17.(Wed) 15:10 ~ 16:00

Conductor David Shih-Wei Lin

Band Introduction

- Winner of the Taiwan National Student Competition for three consecutive years.
 - Performing at the closing concert of the WASBE and Chaiyi International Band Festival since 2007.
 - Silver medalist at the 2012 Singapore International Band Festival.
-



6. Philharmonic Wind Orchestra (Singapore)

Date 2024. 7. 18.(Thu) 14:00 ~ 15:30

Conductor Leonard Tan

Band Introduction

- Comprising over 150 volunteer musicians.
 - 1st place at the 2005 World Music Contest in Kerkrade, Netherlands.
 - 2nd place at the 2013 International Wind Competition in Valencia, Spain.
 - Awarded the gold medal in the concert category at the 2018 Singapore International Band Festival.
-



7. Central Washington University Wind Ensemble (USA)

Date 2024. 7. 17.(Wed) 20:00 ~ 21:30

Conductor André Feagin

Band Introduction

- Comprised of undergraduate and graduate students majoring in wind instruments and percussion at Central Washington University.
 - Featured performers at the 2022 College Band Directors National Association (CBDNA) Western/Northwestern Division Conference.
-



8. US Navy Band (USA)

Date 2024. 7. 18.(Thu) 20:00 ~ 21:30

Band Introduction

- The original ensemble of the US Navy Band, Concert Band, has been holding concerts for over 98 years and is actively participating in prestigious events
 - They have participated in numerous international military parade festivals
 - They receive continuous support from top music education institutions in the United States such as the American Bandmasters Association and the Midwest Clinic
-



9. BYU Wind Symphony (USA)

Date 2024. 7. 19.(Fri) 14:00 ~ 15:30

Conductor Shawn Smith

Band Introduction

- Comprised of top woodwind, brass, and percussion players from Brigham Young University (BYU)
- They have held concerts in over 20 countries including the United States, China, Japan, South Korea, Mongolia, Australia, and New Zealand
- In May 2023, they embarked on a two-week concert tour in Spain and Portugal



10. Brooklyn Wind Symphony (USA)

Date 2024. 7. 20.(Sat) 11:00 ~ 12:30

Conductor Jeff Ball

Band Introduction

- A symphonic wind ensemble based in the New York City area comprised of selected volunteer musicians
- They host regular series at Grand Street High School
- They participate in events such as the Columbia University Wind Festival and the Chicago Midwest Clinic



11. Orchestre d'Harmonie des Jeunes de Strasbourg (France)

Date 2024. 7. 20.(Sat) 14:00 ~ 14:50

Conductor Maxime Maurer

Band Introduction

- Founded in January 2019, comprised of approximately 50 members including musicians from the Strasbourg region and university students
 - Collaborating with institutions, ensembles, and venues such as the Strasbourg National Theater and the Belvoir International University Music Festival
-



12. Landesblasorchester Baden-Württemberg (Germany)

Date 2024. 7. 19.(Fri) 20:00 ~ 21:30

Conductor Mr. Björn Bus

Band Introduction

- Founded in 1978 by the Baden-Württemberg Wind Band Association
 - Awarded the gold medal in the Concert Class at the World Music Contest (WMC) held in Kerkrade, Netherlands, in 2005
 - Achieved 4th place in the European Championship for Wind Orchestras (ECWO) in 2016
-

Confirmed Conductor



Conductor

Beatriz Fernández



Conductor

SURAPOL
THANYAWIBOOL

19th WYWO Conference



13. WYWO (WASBE Youth Wind Orchestra)

Date 2024. 7. 20.(Sat) 15:10 ~ 16:00

Conductor Beatriz Fernández, Surapol Thanyawibool

Band Introduction

- A special project where talented musicians aged 18 to 26 from around the world gather to present the highest level of symphonic wind orchestra performance
- Young musicians from around the globe who share the same passion for wind music will showcase an exciting and diverse repertoire under the baton of world-renowned conductors

03

Fringe Concert

Introducing Bands & Timetable

| Team Introduction |



1. Overseas Teams (15 teams)

- US Navy Band (USA)
- Central Washington Universtiy Wind Ensemble (USA)
- Brooklyn Wind Symphony (USA)
- BYU Wind Symphony (USA)
- Philharmonic Wind Orchestra (Singapore)
- Orchestre d'Harmonie des Jeunes de Strasbourg (France)
- 2024 Gwangju WASBE Festival Wind Orchestra (South Korea)
- Spanish Brass (Spain)
- National Chaiyi University Department of Music Wind Orchestra (Taiwan)
- Adelaide Wind Orchestra (Australia)
- Coruscalia Collective Flute Ensemble (Australia)
- Hai-Shan Primary School Concert Band (Taiwan)
- Seri Puteri Symphonic Winds (Malaysia)
- Munsang College Symphonic Band (Hong Kong)
- Macau Youth Symphonic Band (Macau)

2. Domestic Teams (14 teams)

- Wetutti Wind Orchestra
- Jeju Students Union Wind Orchestra
- Sella Wind Orchestra
- Venusto Flute Ensemble
- Seodaemun-gu Junior Wind Orchestra
- Dasarang Clarinet Ensemble
- Hanbit Orchestra (Hanbitarts)
- The Snail of Love Clarinet Ensemble
- Korea Junior Bigband
- Gwangju-si Symphony Orchestra
- Gyeongnam Philharmonic Youth Wind Orchestra
- Korea National University of Arts Knua Wind Orchestra
- Vivace Wind Orchestra (Kwangil Middle School)
- Gwangju Midam Youth Wind Orchestra
- Korea Culture Media High School Wind Orchestra

| Daily timetable |



Time	Day 1 – 7.16(Tue)			Day 2 – 7.17(Wed)			Day 3 – 7.18(Thu)		
	Namhansanseong	Gwanju City Hall Square	Ceramic Park	Namhansanseong	Gwanju City Hall Square	Ceramic Park	Namhansanseong	Gwanju City Hall Square	Ceramic Park
10:00~10:40									
12:30~13:00				Munsang College	Adelaide Wind Orchestra		Central Washington University Wind Ensemble	Macau Youth Symphonic	
13:10~13:40				Sella Wind Orchestra					
18:00~18:30		K-Arts Knua Wind Orchestra	Venusto Flute Ensemble		Hai-Shan Primary School			Seodaemun-gu Junior Wind Orchestra	
18:40~19:10		Gwangju-si Symphony Orchestra			Seri Puteri			Gwangju Midam Youth Wind Orchestra	
									(TBD) Korea Culture Media High School Wind Orchestra *18:20~18:50
19:00~19:30			US Navy Band			Vivace Wind Orchestra (Kwangil Middle School)			National Chaiyi University
19:40~20:10			*19:00~19:50			Philharmonic Wind Orchestra			Korea Junior Big band

| Daily timetable |

Time	Day 4 – 7.19(Fri)			Day 5 – 7.20(Sat)		
	Namhansanseong	Gwanju City Hall Square	Ceramic Park	Namhansanseong	Gwanju City Hall Square	Ceramic Park
10:00~10:40						
12:30~13:00	Brooklyn Wind Symphony	Orchestre d'Harmonie des Jeunes de Strasbourg		The Snail of Love Clarinet Ensemble		Hanbitarts
13:10~13:40	Dasarang Clarinet Ensemble			Coruscalia Collective		Wetutti Wind Orchestra
18:00~18:30		BYU Wind Symphony				
18:40~19:10		Jeju Students Union Wind Orchestra				
			Gyeongnam Philharmonic Youth Wind Orchestra			
			*18:20~18:50			
19:00~19:30			2024 Gwangju WASBE Festival Wind & Spanish Brass			
19:40~20:10			*19:00~20:10			

04

Clinic

Presenters & Contents

| 20th WASBE 2024 - Clinic |

A forum for academic exchange and education, featuring seminars and masterclasses by the world's leading authorities in the wind community

2024 / 7 / 17

Time	July 17(Wed)	
	Academy 7	Small Theater
9:00 ~ 10:00	09:00~10:00 Michael Mapp Darrell Brown, Catherine likhuta Tom Davoren Melissa Sawyer	09:00~10:00 John Carnahan
10:00 ~ 11:00	10:00~11:00 Simon Tillier	10:00~11:00 Jason Caslor
11:00 ~ 12:00	11:00~12:00 Bryan Griffiths	11:00~12:00 Masanori Fukuda
12:00 ~ 13:00		

Presenter / Panerls	Clinic / Presentation
Michael Mapp Darrell Brown Catherine Likhuta Tom Davoren Melissa Sawyer	The Seven C's: Conductors, Composers, Commissions, Consortiums and Culmination of the Creatively, Collaborative Process
Simon Tillier	Beyond the Score: Using National Identity to Enhance Your Programming - Enhancing the Excellence of Wind Band Programs by Understanding and Utilizing National Identity
Bryan Griffiths	Contemporary Australian Composition for Wind Band: A Coming of Age - Highlighting the Evolution of Australian Wind Bands and Key Musicians through Australia's Rich and Diverse Musical Heritage and Current Noteworthy Works
John Carnahan	The Wind Band Sound: A Definitive Guide to Ensemble Intonation - Introducing the Innovative Referential Tuning System for Addressing Ensemble Intonation Issues in Modern Wind Bands
Jason Caslor	Squirrel! Being Present In A World That Doesn't Want Us To Be - Exploring the Various Impacts of Concentration on Rehearsals, Conducting, and More through the Perspectives of Various Thinkers, Scientifically
Masanori Fukuda	Thinking about the sound mechanism of musical instruments and the three-dimensionality of ensembles - Enhancing Audience Understanding of Music by Considering Instrument Sound Mechanics and Ensemble Dimensionality

| 20th WASBE 2024 - Clinic |

A forum for academic exchange and education, featuring seminars and masterclasses by the world's leading authorities in the wind community

2024 / 7 / 18

Time	July 18(Thu)	
	Academy 7	Small Theater
9:00 ~ 10:00		
10:00 ~ 11:00		
11:00 ~ 12:00	10:30~11:30 Nate Seamons Kandis Taylor David Fullmer	10:30~11:30 Evan Feldman
	11:30~12:00 Yun-Kying Jin	11:30~12:30 Jamal Duncan
12:00 ~ 13:00		

Presenter / Panerls	Clinic / Presentation
Nate Seamons Kandis Taylor David Fullmer	The Frederick Fennell Tapes: Learning from the Master and the Kosei Wind Orchestra, 1989
Yun-Kyung Jin	The Korean wind instrument-PIRI - The history, characteristics, and performance techniques of the Korean Piri
Evan Feldman	Hiding in Plain Sight: "Re-composing" and "De-composing" to Teach the Inner Workings of Repertoire to Students and Audiences
Jamal Duncan	Redefining the Concert Experience: Creating dynamic concerts for our audiences and students

| 20th WASBE 2024 - Clinic |

A forum for academic exchange and education, featuring seminars and masterclasses by the world's leading authorities in the wind community

2024 / 7 / 19

Time	July 19(Fri)	
	Academy 7	Small Theater
9:00 ~ 10:00		
10:00 ~ 11:00		
11:00 ~ 12:00	10:30~11:00 Ka Chun Lin	10:30~11:00 Andrew Pease
	11:00~12:00 Chee Meng Low Damrih Banawitayakit Leonard Tan, Benjamin Yeo	11:00~11:30 Brandon Duras 11:30~12:00 William Kinne
12:00 ~ 13:00		

Presenter / Panerls	Clinic / Presentation
Ka Chun Lin	A new perspective on the development of wind band culture in Southern China and Southeast Asia: The role of the Chinese community in the rise of wind band culture during the pre-war period
Chee Meng Low Damrih Banawitayakit Benjamin Yeo Leonard Tan	Diversity, inclusion and equity of the wind band movement in Thailand, Malaysia and Singapore. A panel discussion on how to strengthen the relationship between the three Southeast Asia countries wind related ensemble, and what's the difficulties we facing
Andrew Pease	Cultivating Deeper Musicianship through Improvisation in Concert Ensembles
Brandon Duras	Now it's starting to sound like music: rehearsal techniques for a high school classroom
William Kinne	Unique Wind Band Works That Encourage Collaboration, Imagination, and Artistic Risk-Taking

| 20th WASBE 2024 - Clinic |

A forum for academic exchange and education, featuring seminars and masterclasses by the world's leading authorities in the wind community

2024 / 7 / 20

Time	July 20(Sat)	
	Academy 7	Small Theater
9:00 ~ 10:00	09:00~10:00 Bradley Ethington, Timothy Diem Milton Laufer	
10:00 ~ 11:00	10:00~11:00 Joop Boerstoel Heleen Huijnen	10:00~11:00 Trae Blanco
11:00 ~ 12:00		
12:00 ~ 13:00		

Presenter / Panerls	Clinic / Presentation
Bradley Ethington Timothy Diem Milton Laufer	Significant Wind Ensemble Repertoire by Underrepresented Composers
Joop Boerstoel	Repertoire in the Pocket - Developing Techniques to Assist Both Professional and Amateur Musicians in Selecting Quality Repertoire
Trae Blanco	Look like their SOUND: Two-step process to incorporating oral articulation into physical gesture, often lost in translation - Various methods of integrating the concept of articulation with conducting gestures

E.O.D